



Glebe Street, London, W4  
Guide Price £1,500,000

**WHITMAN & CO.**

SALES · LETTINGS · COMMERCIAL



A beautifully presented Victorian house, benefitting from an architecturally designed modern open plan interior, situated in the heart of Chiswick in the very popular 'Glebe Estate' - just moments from Chiswick High Road. This exceptionally stylish property comprises a stunning 38' x 15'3 spacious open plan split-level living space incorporating: front dining area with feature bay window, bespoke designer kitchen with island, rear living area with full width glass opening doors to outside and overhead fixed ceiling glass, oakwood flooring throughout, underfloor heating, open staircase with glass balustrade and landing, three double bedrooms with custom made bespoke wardrobes and modern flat panel radiators, luxury main bathroom with freestanding bath and separate shower, further ensuite shower room with glass paneled wet area and overhead shower, outside is a private landscaped 33' rear garden. Ideally situated moments from Chiswick High Road, Turnham Green Terrace, and Devonshire Road with its cafes, bars, boutiques, shops, and restaurants (including the Michelin-starred La Trompette). Local transport links include Turnham Green tube station, numerous local bus routes and vehicular access via A4/M4 to central London, Heathrow and the West. No onward chain.



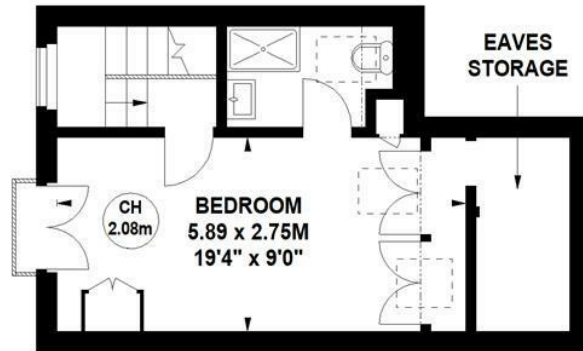
# Glebe Street, W4

Approximate gross internal area  
121.79 sq m / 1311 sq ft  
(Including Eaves Storage)

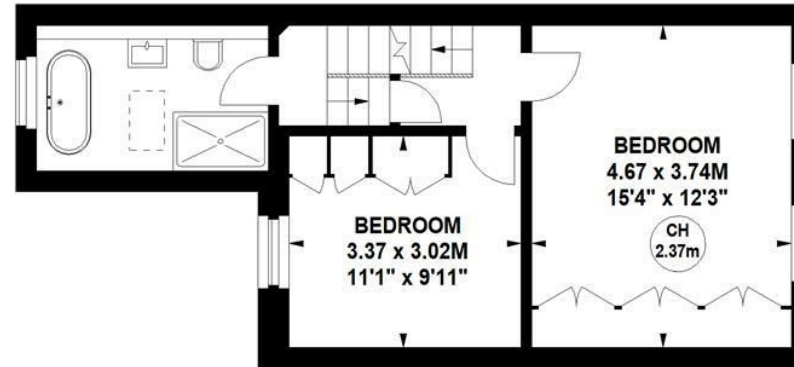
Eaves Storage : 3.81 sq m / 41 sq ft



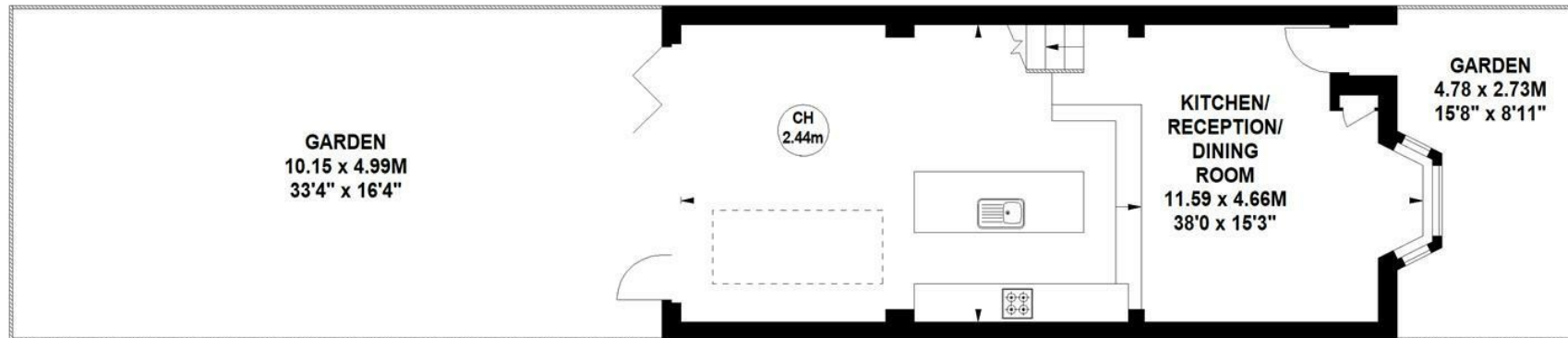
Key :  
CH - Ceiling Height



Second Floor



First Floor



Ground Floor

Not to scale, for guidance only and must not be relied upon as a statement of fact.  
All measurements and areas are approximate only

- Architect designed Victorian home
- Three double beds/two baths
- Located in the 'Glebe Estate' in the heart of Chiswick
- Stunning 38' x 15'3 open plan split level living space
- Private 33' garden
- No onward chain
- Tenure - Freehold
- Local Authority - Hounslow
- Council Tax - Band G

